

Probe type



Specified probe is hardwired to unit (no probe connector)

SPECIFICATIONS

Scanning Method	Convex • Linear electronic scan	Dimension (WxDxH)	Approx. 184x 62x 270 (mm)
Display Mode	B-mode (single)	Weight	Approx. 2.0 kg (including the probe and battery)
Monitor	5.7inch QVGA LCD	Power Source	Battery Approx. 2hours continuous operation Battery charger : Input Voltage: 100V-240V AC 50/60Hz
Range	Range select: 6 -24cm (2cm step)	Probes	HCS-136C : 3.5MHz 60R Convex probe HLS -138C : 3.5MHz 80mm Linear probe HCS-152 : 5.0MHz 20R Microconvex probe HLV-155 : 5.0MHz 50mm Rectal probe
Focusing Method	Digital beam forming	Standard components	HS-101V with Probe Shoulder belt AC adaptor Power supply cord Charger base Battery Gel
Image Adjustment	Auto gain control Gain control: 16 steps STC control: 8 steps	Option	Stand Standholder Battery Sun shield Nonglare filter Carry bag
Image Store	Flash memory (60 Images)		
Image Functions	Date & Time Probe type Range (Gain Value)		
Interface	One USB port		

*The specifications and appearance are subject to change without notice for improvement.
*Made in Japan

Ultrasonic Scanner

Convex • Linear Ultrasonic System

HS-101V

Our unique technology is the product of our originality and continual pursuance of achieving high quality. It is also our purpose to contribute in ways that will enhance society.



Ultrasound is harmless to animals from veterinarians to livestock owners for early stage pregnancy detection in sows and cattle.



A Special Compact Unit in its Own Right

HONDA ELECTRONICS CO.,LTD.
 Medical Division
 20 Oyamazuka, Oiwa-cho, Toyohashi
 Aichi Prefecture, 441-3193 Japan
 TEL: +81-532-41-2514 FAX: +81-532-41-4441
www.honda-el.com

Registered company for
 ISO 9001/ ISO 13485/ ISO 14001

A Special Compact Unit In Its Own Right Advanced technology and excellent image embodied in a compact unit



Ultrasonic Scanner

Convex • Linear Ultrasonic System

The HS-101V

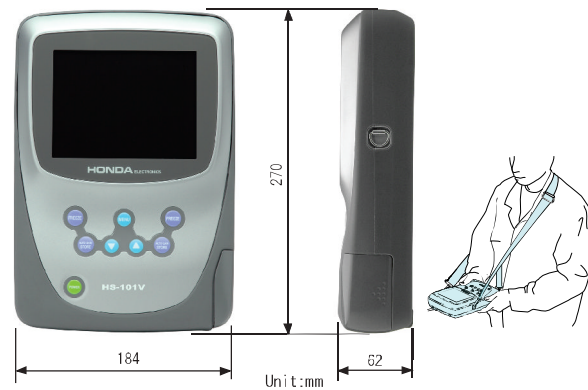
Features:

1. Portability
2. Large Monitor
3. Easy (Simple) Operation
4. Battery
5. Image Storage
6. Coil Cord



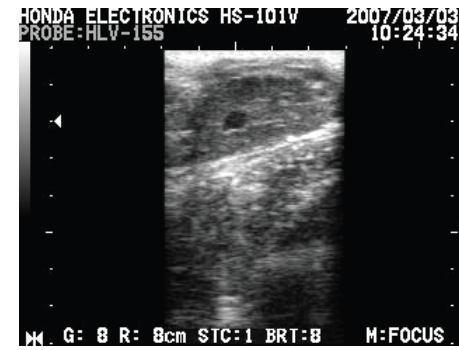
1 Portability

Portability with shoulder belt allows total freedom of movement. Compact design and easy operation.



2 Large Monitor

5.7 inch size LCD monitor provides easy viewing.



3 Easy Operation

Thanks to simple button design, operation is easy. Auto gain function eliminates tedious work adjusting image. Symmetric button design allows left or right handed operation.

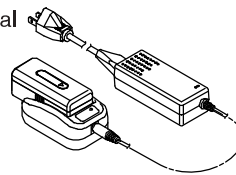


4 Battery

Approx. 2 hour battery operation allows continuous scanning anywhere, anytime.



For charging of battery, an external charger is included. It is available as standard for AC100V-240V along with power supply cord.



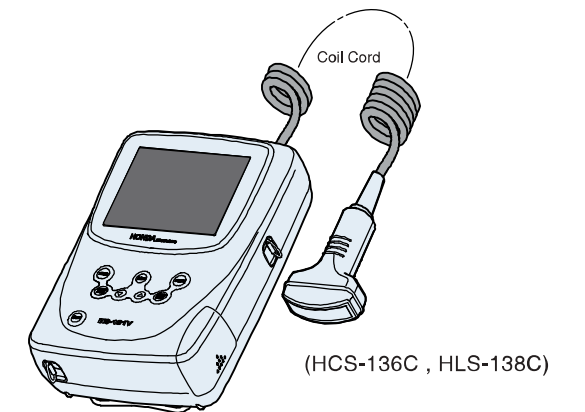
5 Image Storage

60 still images can be stored, and memory function allows review of the stored pregnancy images. USB port is standard.

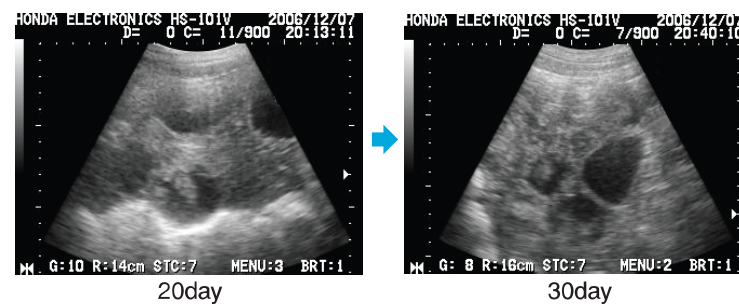


6 Coil Cord

Convenient coil cord helps speed up scanning process.



Sow Pregnancy



Cattle Pregnancy

